



City of Boise Police Department 2008 Crime and Enforcement Report



Calls for Service

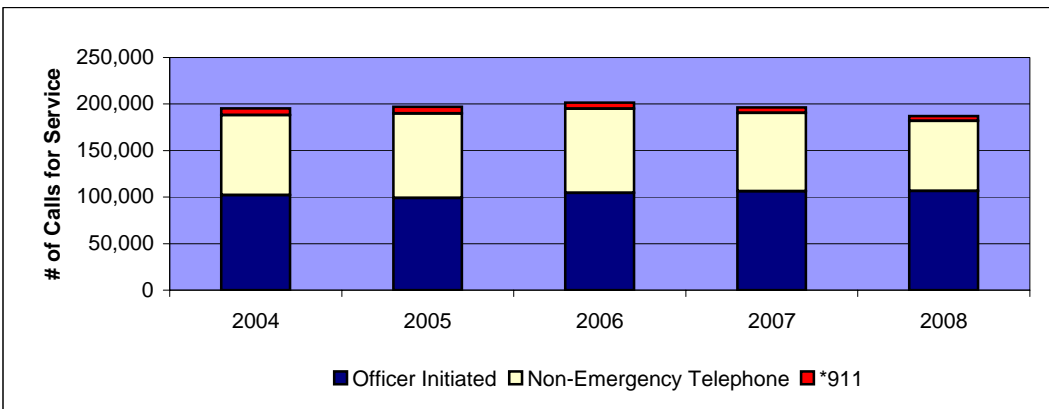
| | 2004 | 2005 | 2006 | 2007 | 2008 | 2007-2008 %change |
|-------------------------------------|----------------|----------------|----------------|----------------|----------------|----------------------|
| Total Calls for Service | 195,418 | 196,916 | 201,509 | 196,315 | 187,065 | -4.7% |
| <i>Total Public Initiated Calls</i> | <i>93,155</i> | <i>98,040</i> | <i>96,986</i> | <i>90,106</i> | <i>80,601</i> | <i>-10.5%</i> |
| *911 | 7,152 | 7,131 | 6,476 | 5,748 | 5,098 | -11.3% |
| Non-Emergency Telephone | 86,003 | 90,909 | 90,510 | 84,358 | 75,503 | -10.5% |
| Officer Initiated | 102,263 | 98,876 | 104,523 | 106,209 | 106,464 | 0.2% |

Population:

COMPASS 2007: 213,503
 COMPASS 2008: 214,490
 % Change: .46% increase

Top 10 public initiated calls:

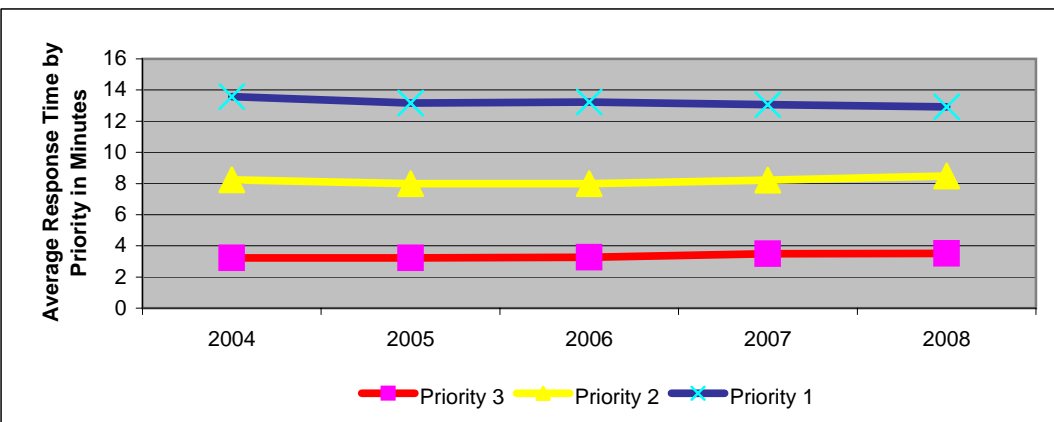
| | |
|--------------------------|------|
| Welfare Check | 3935 |
| Property Damage Accident | 3864 |
| Burglary Alarm | 3729 |
| Theft Report | 2143 |
| Reckless ATL | 1702 |
| Noise Complaint | 1664 |
| Abandoned Vehicle | 1594 |
| 911 Hangup Call | 1571 |
| suspicious Vehicle | 1545 |
| Fraud Report | 1506 |



*The reduction in 911 calls is attributed to increased cell phone usage and an issue with the CAD system when transferring the call from one system to another.

Response Time

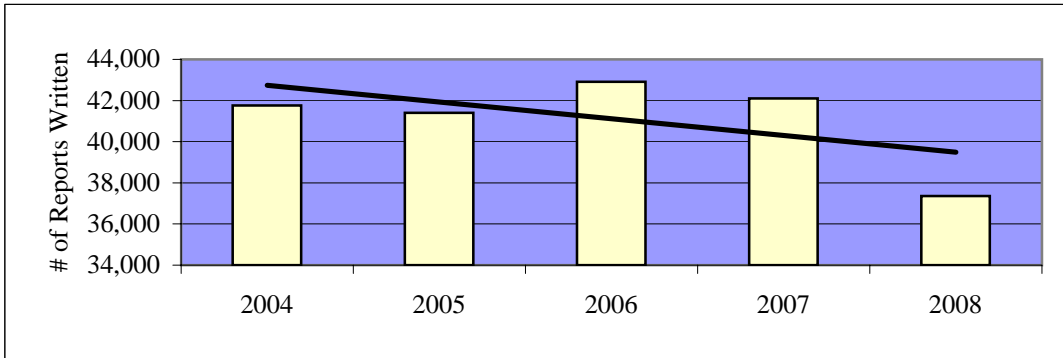
| | 2004 | 2005 | 2006 | 2007 | 2008 | 2007-2008 %change |
|--|-------------|-------------|-------------|-------------|-------------|----------------------|
| **Average Response Time (Dispatch to Arrival) | 8.34 | 8.12 | 8.16 | 8.26 | 8.30 | 0.6% |
| Priority 3 | 3.22 | 3.23 | 3.26 | 3.49 | 3.52 | 0.9% |
| Priority 2 | 8.23 | 7.98 | 7.98 | 8.22 | 8.48 | 3.2% |
| Priority 1 | 13.58 | 13.16 | 13.23 | 13.06 | 12.91 | -1.1% |



**Average response time has been adjusted from dispatch to arrival because of a CAD system error.

Reports, Arrests and Citations

| | 2004 | 2005 | 2006 | 2007 | 2008 | 2007-2008 %change |
|-----------------------------|--------|--------|--------|--------|--------|----------------------|
| # of Reports Written | 41,766 | 41,406 | 42,916 | 42,102 | 37,362 | -11.3% |



Crime Statistics

| Index Crimes | 2004 | 2005 | 2006 | 2007 | 2008 | 2007-2008 %change |
|---------------------------|--------------|--------------|--------------|--------------|--------------|----------------------|
| Murder Total | 1 | 5 | 5 | 9 | 1 | -88.9% |
| Rape Total | 114 | 115 | 123 | 119 | 82 | -31.1% |
| Robbery Total | 78 | 83 | 110 | 69 | 65 | -5.8% |
| Aggravated Assault Total | 458 | 455 | 463 | 389 | 358 | -8.0% |
| Burglary Total | 1228 | 1320 | 1159 | 1013 | 1097 | 8.3% |
| Theft Total | 5507 | 5695 | 5104 | 4805 | 4671 | -2.8% |
| Motor Vehicle Theft Total | 503 | 476 | 375 | 368 | 209 | -43.2% |
| Arson Total | 71 | 77 | 52 | 82 | 51 | -37.8% |
| Totals | 7,960 | 8,226 | 7,391 | 6,854 | 6,534 | -4.7% |

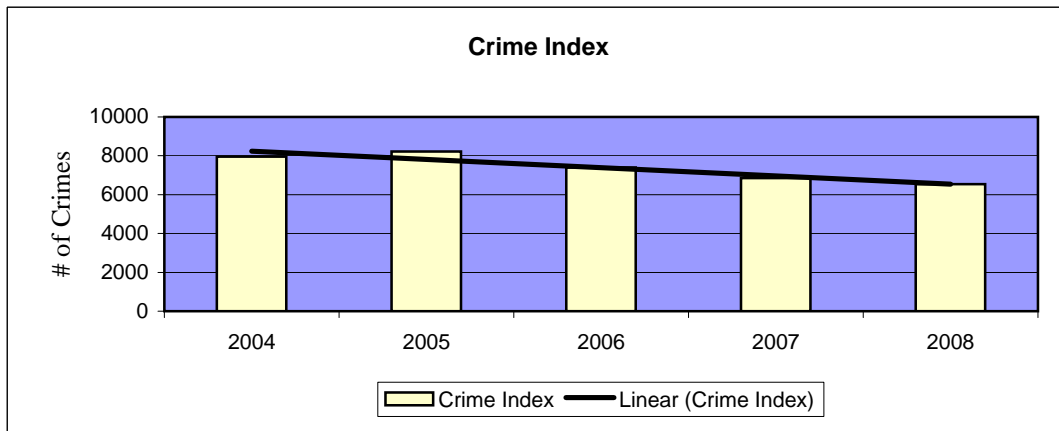
2008 reflects a 4.7% reduction in the total top eight index crimes over 2007 and a 20% reduction over the five year high in 2005.

Clearance Rate:

2007: 21.9%

2008: 21.9%

Clearance Definition: Those cases which have been cleared by an arrest, a summons, or by exceptional means when some element beyond law enforcement control precludes a physical arrest. *Those cases with an outstanding warrant, though solved, are not included in the clearance rate.*



Index crimes are the eight crimes the FBI combines to produce its annual crime index. These offenses include willful homicide, forcible rape, robbery, burglary, aggravated assault, larceny over \$50, motor vehicle theft, and arson. In order to compare statistical information on a national basis it was necessary to come up with a common definition for crime comparison. The index seeks to overcome differences in individual state statutes, that would ignore how the individual is charged, and create a standardized definition of crime classification. This was done through defining serious and non-serious offenses. Part I crimes are comprised of serious felonies and Part II crimes are comprised of non serious felonies and misdemeanors. Together these two types of classifications make up the crimes reported in the Uniform Crime Reports (UCR).

Crime Statistics

| Group A Crimes | 2004 | 2005 | 2006 | 2007 | 2008 | 2007-2008 %change |
|---------------------------|--------------|--------------|--------------|--------------|--------------|-------------------|
| Sexual Assault (Not Rape) | 164 | 122 | 168 | 109 | 131 | 20.2% |
| Sexual Assault (No Force) | 26 | 23 | 19 | 20 | 30 | 50.0% |
| Assault / Battery | 1955 | 1,881 | 1,980 | 1,688 | 1,561 | -7.5% |
| Intimidation / Stalking | 293 | 320 | 361 | 319 | 299 | -6.3% |
| Kidnapping / Enticement | 42 | 43 | 61 | 58 | 53 | -8.6% |
| Porno/Obscene Material | 4 | 7 | 7 | 9 | 14 | 55.6% |
| Prostitution Offenses | 1 | 3 | 14 | 6 | 7 | 16.7% |
| Forgery & Counterfeiting | 513 | 613 | 538 | 343 | 213 | -37.9% |
| Fraud | 556 | 815 | 828 | 934 | 932 | -0.2% |
| Embezzlement | 83 | 93 | 114 | 122 | 119 | -2.5% |
| Extortion/Blackmail | 4 | 2 | 2 | 6 | 4 | -33.3% |
| Bribery | 1 | 0 | 0 | 1 | 1 | 0.0% |
| Gambling Offenses | 0 | 1 | 0 | 0 | 0 | 0.0% |
| Vandalism Total | 2,497 | 2,423 | 2,990 | 2,855 | 2,250 | -21.2% |
| <i>Graffiti</i> | 194 | 281 | 490 | 591 | 568 | -3.9% |
| <i>Damaged Property</i> | 2303 | 2,142 | 2,500 | 2,264 | 1,682 | -25.7% |
| Drug Violations | 1,200 | 1,211 | 1,333 | 1,197 | 1,044 | -12.8% |
| Drug Paraphernalia | 903 | 928 | 1,096 | 888 | 785 | -11.6% |
| Stolen Property Offenses | 97 | 126 | 78 | 76 | 39 | -48.7% |
| Weapon Law Violations | 301 | 309 | 288 | 258 | 206 | -20.2% |
| Total | 8,640 | 8,920 | 9,877 | 8,889 | 7,688 | -13.5% |

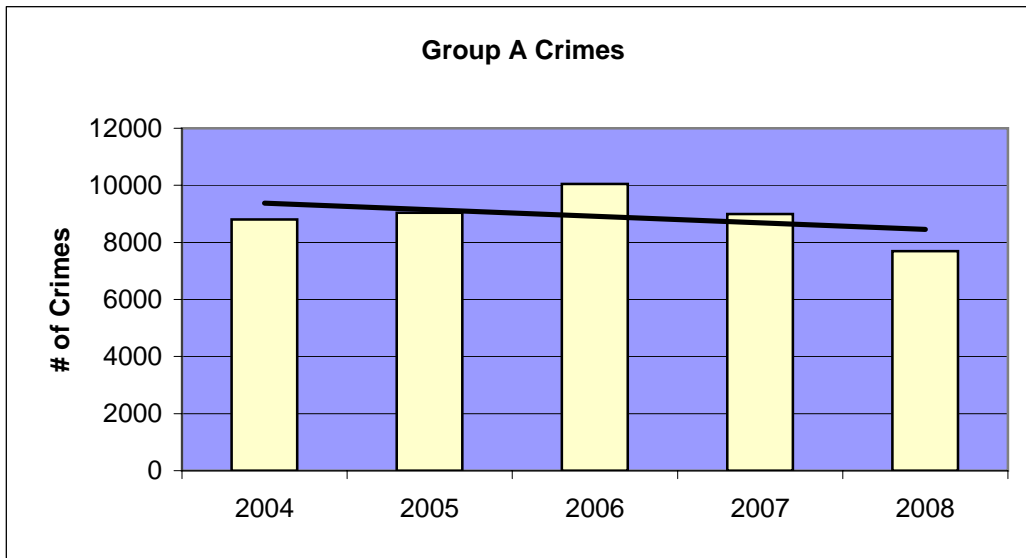
2008 reflects an overall 13.5% reduction in the modified Group A category over the 2007 crime totals and reflects a 22% decrease over 2006 which remains the five year high.

Clearance Rate:

2007: 42.4%

2008: 53.8%

Clearance Definition: Those cases which have been cleared by an arrest, a summons, or by exceptional means when some element beyond law enforcement control precludes a physical arrest. *Those cases with an outstanding warrant, though solved, are not included in the clearance rate.*



Group A Crimes are an extension of the index crimes to make up the grouping that the FBI deems as the Group A Offenses.